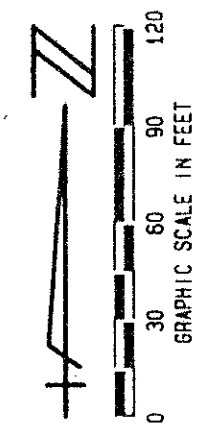


STATE OF FLORIDA
 COUNTY OF PALM BEACH
 THIS PLAT WAS FILED FOR
 RECORD _____ DAY OF _____
 AD, 1995 AND ONLY RECORDED
 IN PLAT BOOK _____ ON PAGES
 AND _____
 DOROTHY H. WILKEN, CLERK
 BY: _____, D.C.



ADDISON RESERVE PARCELS FOUR & FIVE

PART OF GLENEAGLES/POLO CLUB WEST P.U.D.
 BEING A REPLAT OF TRACTS 4 & 5
 ADDISON RESERVE PLAT ONE (P. B. 75, PGS. 143-149)
 SITUATE IN SECTIONS 27 & 28, TOWNSHIP 46
 SOUTH, RANGE 42 EAST
 PALM BEACH COUNTY, FLORIDA

APRIL, 1995 SHEET 4 OF 4

*REV. 90-215(M)
 CURRENT
 5/3/21K*

ADDISON RESERVE
 PARCELS FOUR & FIVE
 SUBDIVISION BOOK 76 PAGE 11
 FLOOD MAP #215A ZONING RT5
 CITY AD # 27 ZIP CODE 33496
 SE 50-215 PUD NAME GLENEAGLES/POLO CLUB WEST

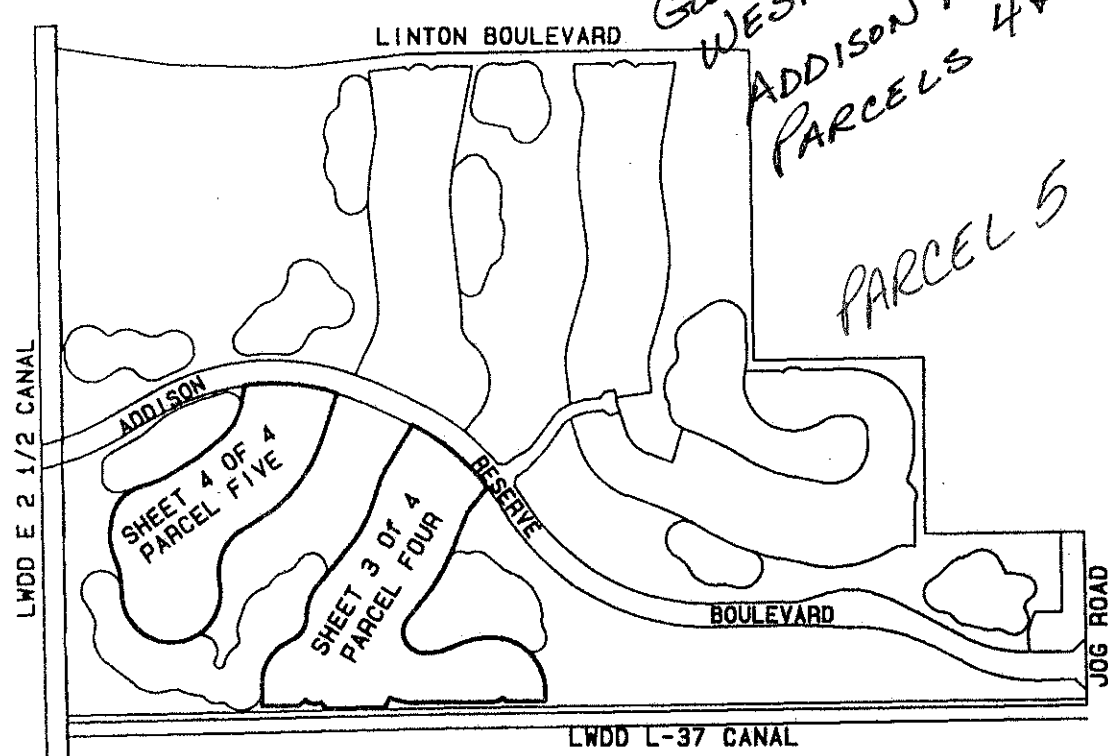
TAZ-477

Rev. 7-10-95
 Rev. 5-18-95
 CADD FILE
 TWKCRP04

Palm Beach County
 Control Point *GAS*
 Brass Disk In Conc.
 N766284.5770
 E932749.7310

COORDINATE NOTE:
 ALL DISTANCES ARE GROUND
 SCALE FACTOR = 1.0000242
 COORDINATES SHOWN ARE GRID
 DATUM = NAD 83 1990 ADJUSTMENT
 ZONE = FLORIDA EAST
 LINEAR UNIT = US SURVEY FEET
 COORDINATE SYSTEM 1983 STATE PLANE
 TRANSVERSE MERCATOR PROJECTION
 GROUND DISTANCE X SCALE FACTOR = GRID

- LEGEND:
- L.M.D.D. LAKE WORTH DRAINAGE DISTRICT
 - FPL FLORIDA POWER & LIGHT
 - ORB OFFICIAL RECORD BOOK
 - PRBCO PALM BEACH COUNTY
 - PRM PERMANENT REFERENCE MONUMENT
 - P.B. PLAT BOOK
 - Pd. PAGES
 - PG. PAGE
 - U.E. UTILITY EASEMENT
 - D.E. DRAINAGE EASEMENT
 - TWP TOWNSHIP
 - RNG. RANGE
 - (NR) NON RADIAL
 - C.L. CENTERLINE
 - PERM. CONTROL POINT PERMANENT CONTROL POINT
 - PERM. REF. MONUMENT PERMANENT REFERENCE MONUMENT
 - SET PL. 4763 PERMANENT REFERENCE MONUMENT FOUND
 - L.M.A.E. LAKE MAINTENANCE ACCESS EASEMENT
 - L.M.E. LAKE MAINTENANCE EASEMENT
 - R/W RIGHT OF WAY
 - EASE. EASEMENT
 - PUD PLANNED UNIT DEVELOPMENT



SHEET LOCATION MAP
 NOT TO SCALE

THIS INSTRUMENT WAS PREPARED BY MARY HANNA CLODFELTER, P.L.S., IN THE OFFICES OF MOCK, ROOS & ASSOCIATES, INC., 5720 CORPORATE WAY, WEST PALM BEACH, FLORIDA 33407.

76111

MOCK, ROOS & ASSOCIATES, INC.
 5720 CORPORATE WAY, WEST PALM BEACH, FL 33407 (407) 689-3113

SCALE: 1"=60'
 DATE: APRIL, 1995
 P.A. NO. 94182, 04/05
 DWG. NO. 46-42-28-29
 ADDISON RESERVE
 PARCELS FOUR & FIVE
 PART OF GLENEAGLES/POLO CLUB WEST P.U.D.
 SECT. 27 & 28, TOWNSHIP 46 SOUTH, RANGE 42 EAST

0230-016

ADDISON RESERVE PARCELS 4 + 5